

EX50 anti-panic doors' hydraulic door opener

Technical specifications

reference	EX50
pulling force	50kN
jack stroke	251.5 mm / 10 inch
dimensions	1020 x 254 x 200 mm - 40 x 10 x 8 inch
weight	9.5 kg - 20 lbs
colours available	● ●
lever	ref. SINGLE HEAD
PELICASE transport case	yes, ref. VDT/EX50
coupling cap	optional, ref. BF



more distance for more safety - wired/wireless remote control



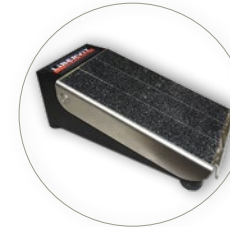
convertible wired/wireless radio remote control
hand remote control



power cable



foot pedal remote control



Designed to open standard anti-panic doors, the EX50 is positioned horizontally across the door. EX50 is powered by a LIBERVIT hydroelectric power unit or a LIBERVIT hand pump. Fit the EX50 to the door by the lock, then use the tool service handle or remote control to activate it. A SINGLE HEAD lever can be used to create enough space to fit the EX50 base plate. Some high-risk mission requires to use a remote control to safely operate from a distance. The radio remote mode has a 30m (98ft) range and the cabled remote 5m (16ft). The EX50 comes in its airtight PELICASE transport case as standard (VDT/EX50). The case is lined with high-density foam imprinted with the tool shape for a perfect fit. All are cases meet military and air transport standard and have wheels and removable handle.